

# The Role of the Cancer Lead Nurse

*A Personal Perspective*

Liz Summers

Cancer Lead Nurse





NHS hospital trusts provide services across PCT areas, as do the following:

- Leicestershire Partnership NHS Trust
- Northamptonshire Healthcare NHS Trust
- Two Shires Ambulance Service NHS Trust
- East Midlands Ambulance Service NHS Trust



# LNR Cancer Network

- Core population of 1,517,466
- Formulated in April 2003
- 3 Acute Trusts
- 9 to 3 PCTs
- 3 lead nurses - different in each Trust



# LNR Cancer Network

- Good clinical engagement in all disciplines
- Visible Network team - work closely with local team
- Proactive/Supportive Network Nurse Director
- Peer Support

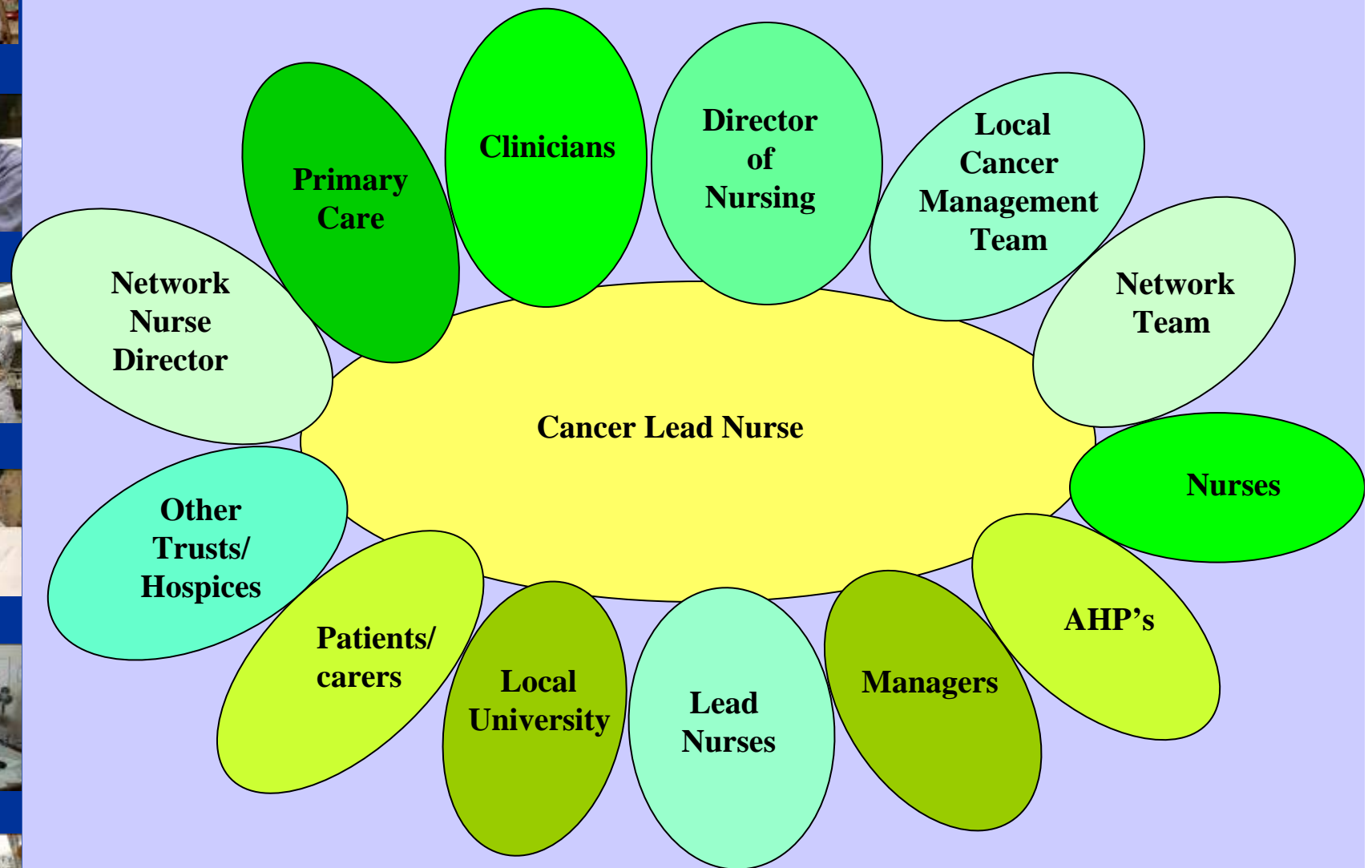




# The Role of the Cancer Lead Nurse

- Good working relationship with Director of Nursing and key players within the Trust
- Support of Cancer Network
- Maintain high profile
- Political awareness
- User involvement

# SPAN OF INTERCOMMUNICATION









**NHS**



# LNR CANCER NETWORK

## Nursing and Allied Health Professionals Strategy

November 2004





# Network & Local Initiatives

- Lung Cancer Project
- Network Wide Patient Satisfaction Survey
- Educational Strategy
- Communication Skills Training
- Urology Nurse Led Clinics
- Nurse Specialist Review



# Lung Cancer Project

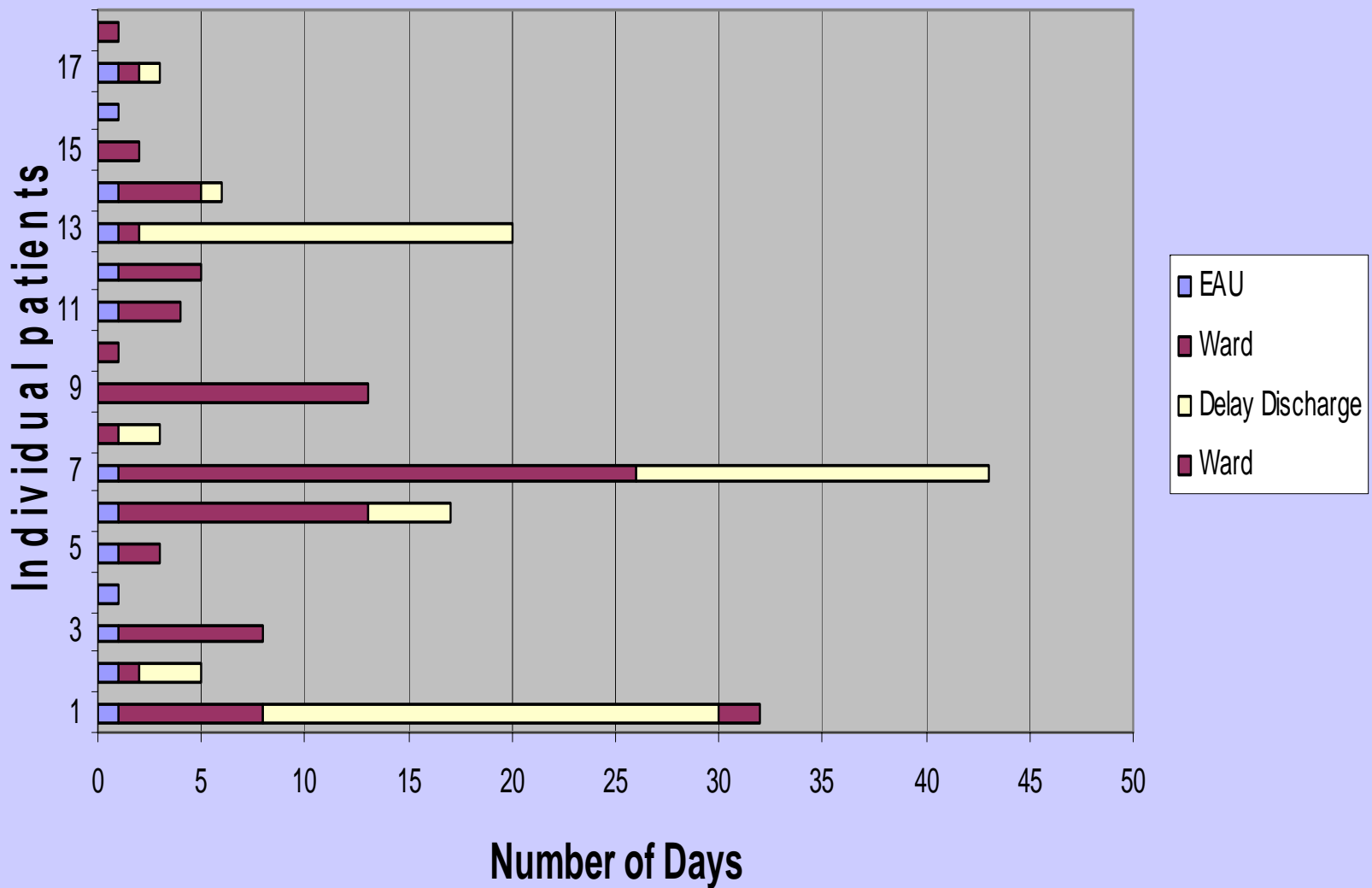
- Audit of cancer deaths in hospital
- Concerns
  - Number of deaths in hospital
  - Length of stay before death



# Lung Cancer Project

- Lung Cancer Patients
- Admitted in times of crisis
- High proportion admitted for non-medical reasons
- Lung Cancer CNS involved late in the care episode
- Delays in discharge

## Length of Stay for a Sample of Emergency Admissions for Lung Cancer Patients from June 2005 to March 2006



# Aims

- Prevent unnecessary admissions for lung cancer patients
- Improve the experience of living with lung cancer
- Reduce the length of stay for lung cancer patients admitted as an emergency



# Outpatient Pathway

Handover to key worker in the community

Breathlessness management in the community

Pre-diagnosis  
(2ww)

Diagnosis

Treatment

Follow-up

Emergency Admissions



# Inpatient Pathway

Alert  
CNS

A&E

EAU

Admitted

Discharge/  
Death

Plan  
Discharge



# Results

- Avoided admissions
- Reduced the number of unnecessary bed days
- Improved the patient experience of breathlessness
- Achieved chose of place of death
- Working to implement the role of key worker in the community





Leicestershire, Northamptonshire &  
Rutland Cancer Network



NETWORK WIDE SURVEY OF  
CANCER PATIENTS ACROSS LNR

UNIVERSITY HOSPITALS OF LEICESTER  
NORTHAMPTON GENERAL HOSPITAL  
KETTERING GENERAL HOSPITAL





**NHS**



## LNR CANCER NETWORK

### Cancer Education Strategy

August 2005





LEICESTERSHIRE • NORTHAMPTONSHIRE • RUTLAND

CANCER NETWORK



## **Advanced Communication Skills Course**

### **Information for Health Care Professionals**

# Network Wide Nurse Led Review for Patients with Prostate Cancer

- Reduce waiting list
- Enhance the patient experience
- Joint working between nurse specialists, lead nurses, clinicians and managers
- Documentation to support new service adopted across the network
- ? Move clinics to community





# Nurse Specialist Review

- The role of the CNS is under the microscope
- Vital we secure CNS role in the future
- Fit for purpose in new NHS
- Cross boundary working with primary care
- Instrumental in supporting the Trust to meet their overall goals



# Conclusion

- The success of cancer care and cancer networks multifaceted
- Working together across different boundaries of care is vital to that success
- The lead nurse is pivotal in influencing patient care and supporting and guiding the workforce

